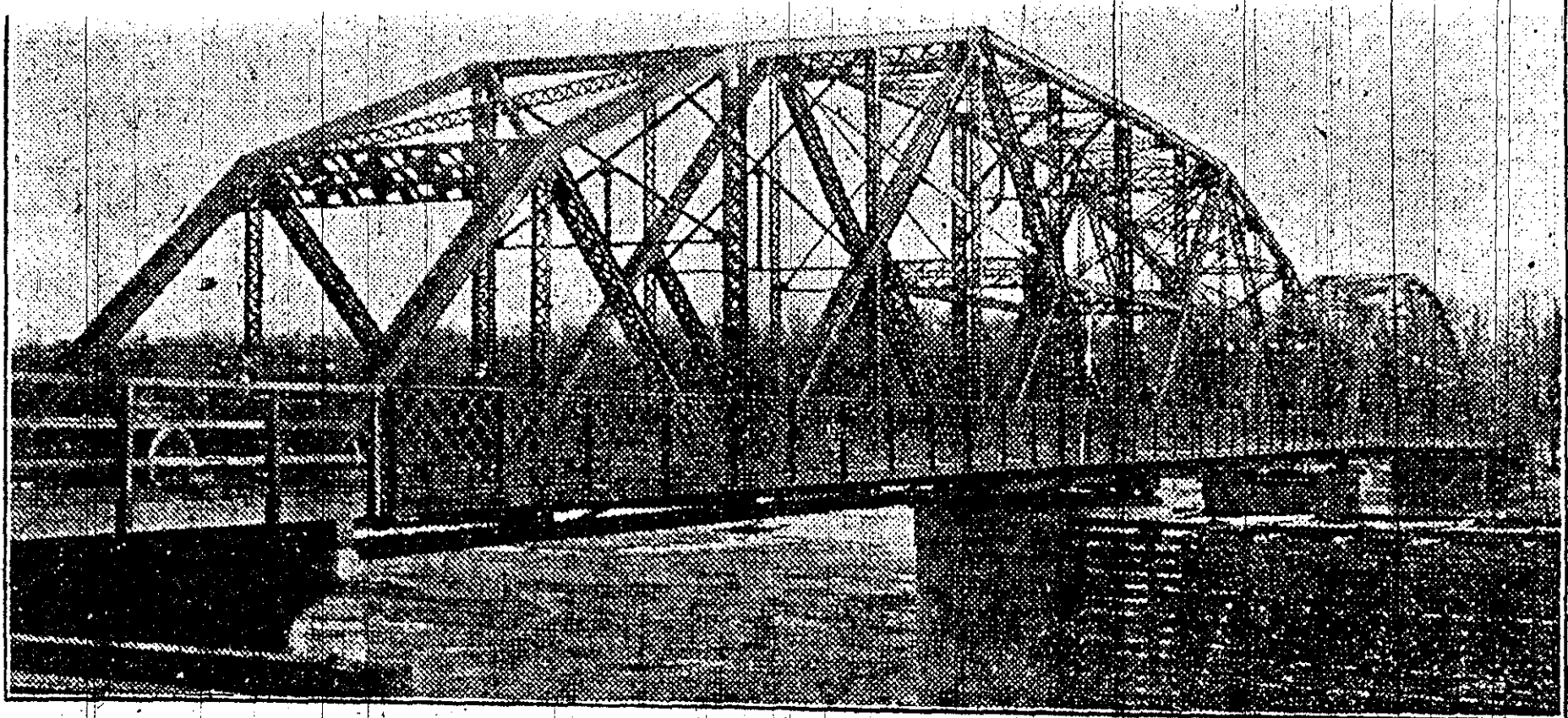


of
ies
an-
at
on-
ne-
the
ery
of
ion
ter
to
the
ble
on

TH

ill
r's
one
ery
is
ost
7,-
vas
nt-
lve
k's
a
ed
ld
he
2,-
as
ce.
ow
ds
res
om
en
ey
s-
rer



The above cut shows the Elm Park company's new steel bridge connecting Elm park with the city of Winnipeg, which is now practically completed. It is being used both by foot passengers and vehicles. The first vehicle to cross the bridge was the auto of J. Snowden, which is shown in the photograph with Mr. Snowden at the wheel. This informal opening took place last Saturday, March 14. The substructure of this bridge, consisting of the concrete piers, abutments, etc., was constructed for the company by Fowler & Young, contractors, who completed their work last year. The steel superstructure has been

constructed by the Dominion Bridge Co., Ltd. This consists of a swing span 278 feet long, a fixed span 222 feet long and an approach on the south side about 100 feet long. The roadway is 16 feet in width, and there is a sidewalk on each side 8 feet in width. The floor of the bridge is about 25 feet above the summer water level in the Red river, and consequently it will only be necessary to open the swing span for the very largest passenger steam boats. The company have also had built this year by W. J. Holmes, contractor, an ice protection and navigation pier or fender on the upper side of the pivot pier. All the work in connection with this bridge has been done under the

supervision of Prof. E. Brydone-Jack as consulting engineer and A. S. Innes as field engineer. The total cost of the bridge will be about \$125,000, and it has been built entirely at the expense of the Elm Park Co., Ltd., with the object of rendering easily accessible to the city their Elm park residential property. As the municipality of St. Vital has already given a contract for the construction of sewers through Elm park, to be finished by August 1st, this year, and expect to have water service installed by that date also, the future of the property is now assured. The building restrictions, which allow nothing but private residences of the value of at least \$6,000 to \$8,000, will insure a high-class residential district.

MARCH 21 1914