

Disposal Plant Opening Marks Another Milestone For City of East Kildonan

Another milestone was reached in the progress of The City of East Kildonan when the newly constructed Refuse Disposal Plant located on Melrose avenue was recently put into operation.

This modern plant, which is probably the only one of its kind specifically designed to meet the new Manitoba regulation on atmospheric pollution, was built at a cost of \$350,000.

Some new approaches to the problem of municipal incineration were tried and the result is the modern functional structure pictured here.

The plant was designed to provide the citizens of East Kildonan with the most efficient and economical method of refuse disposal available and tests to date indicate that this goal has been achieved.

The Province of Manitoba Environment Sanitation Laboratory officials have checked the operation for quantities of smoke and fly ash and have given it a clean bill of health in accordance with the air pollution requirements.

The plant uses a hydraulic ram to feed garbage into the furnace, which is the first installation of this type in Canada. Even the chimney is a novel item since it is not used during normal operations.

A large fan discharges the hot flue gases into a duct passing through the roof and the chimney is used only when the furnace is too hot or too cold or when there is an electrical power failure. The switch

from fan to chimney is managed with automatic control and does not require the operator's attention.

Garbage is so thoroughly buried in the furnace that every 100 cubic yards of garbage is reduced to only 5½ cubic yards of fine ash, and to prevent any dust nuisance the ash is saturated with water before being dumped into the trucks.

The furnace is capable of burning more than 100 tons of garbage of all types in a 24-hour day.

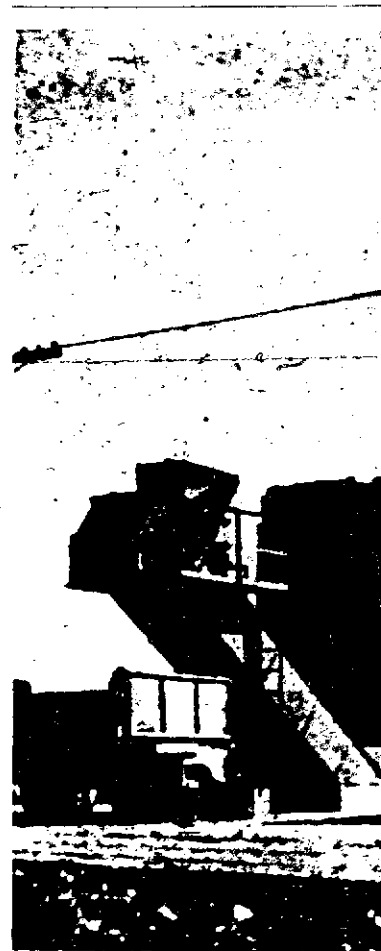
The entire installation was under the direction of the former city engineer, J. W. Battershill. W. J. Patton, professional engineer, acted as combustion consultant.

The building, which won the Massey Foundation Award as one of Canada's outstanding buildings, was designed by Libling, Michener & Associates, who supervised the construction by F. W. Sawatzky Limited. Furnace contractors were Canadian Brown Steel Tank Limited and American Incinerator Corporation.

The completion of this plant, which is the largest single construction project undertaken by East Kildonan, is one more indication of the tremendous development that has taken place in the city in recent years—development which has been made possible only through the efforts of progressive-minded citizens who were willing to invest in the future of their community.

It would seem appropriate at this time to draw attention to some of the facilities and services which have been provided for the citizens of East Kildonan over the past few years.

In 1951 the census figures



EAST KILDONAN MOVES FORWARD: East Kildonan's Refuse Disposal Plant is located at 901 Melrose ave. Top picture is a view of the west end of the plant showing the ash conveyor, where the ash is removed after the refuse has been reduced to 5½% of its original volume. Right is a view of the furnace as it is receiving a charge of refuse. The complete furnace operation is controlled automatically from the panel shown on the right. This award-winning building was built as a Winter Works project. Anyone interested in examining the plant may do so on Saturday between 9 a.m. and 1 p.m.

Street Lighting Program To Be

Freeway Helps Transportation