

Plans For Rossmere E.K. Golf Course Near Completion

Local golf enthusiasts will be pleased to learn that the East Kildonan Golf Course appears to be well on the way towards becoming a certainty.

The property comprises approximately 170 acres at the end of the East Kildonan car line between Henderson Highway and the C.P.R. tracks. There is a creek meandering throughout and plenty of good trees on the property.

Layout plans are well on the way and it is hoped that the complete 18 holes will be blazed and cleared this fall, and some of the grassland utilized for a few holes early next year.

A board of management has been formed comprising J. Leslie Bodie, George Duncan, Fraser Campbell, Ed. Hanel, James B. Schmor and Russ Atwell.

Pledge forms are now ready and for the benefit of local golfers an installment option is available.

Anyone interested should get in touch with Ed. Hanel, Washington and Watt, phone 501 276, or any one of the board. Forms will also be available at the Imperial Bank, Melrose ave.

The shares are very limited and the interest from outside golfers is keen, so that local residents are advised to get their applications in early.



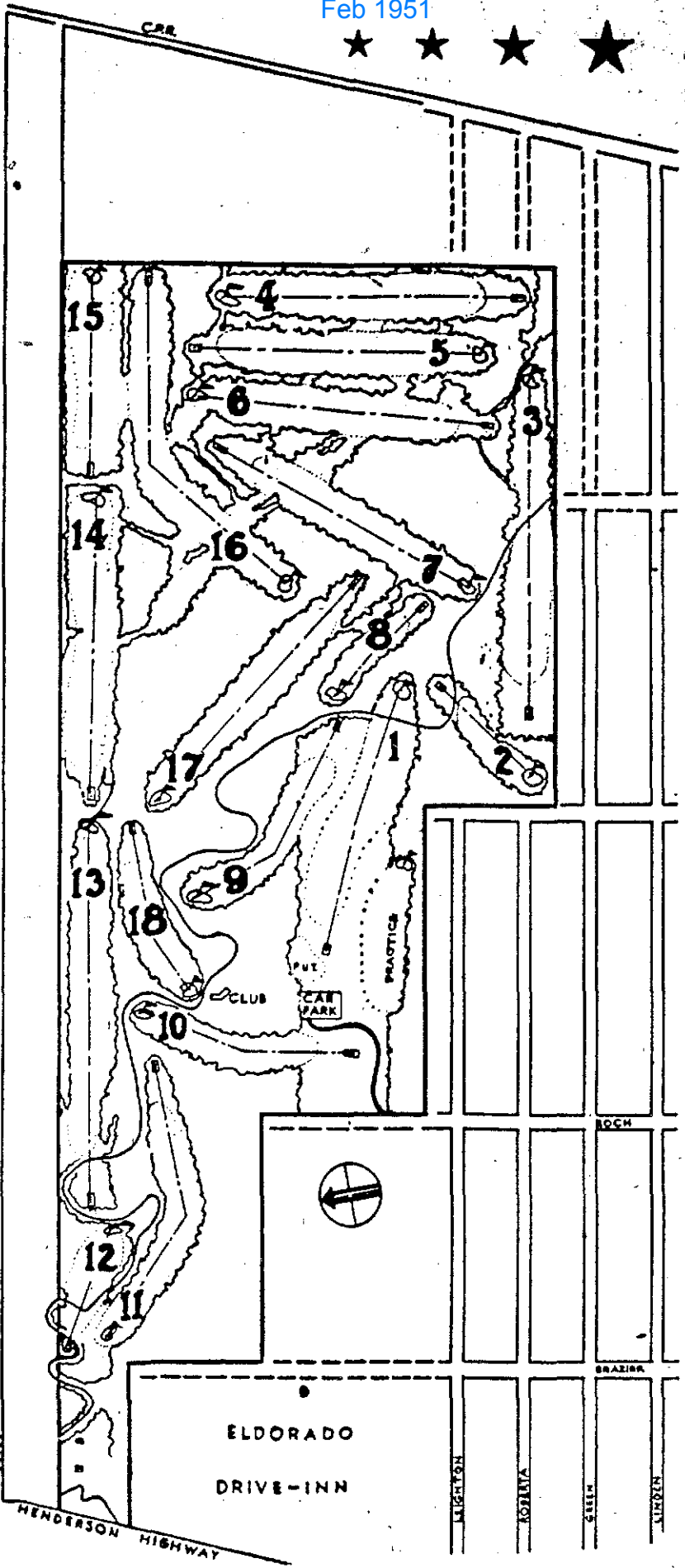
l to
and
fire
and
eted
ing-
lpeg
ing
ing
age,
is
al
o
lost
this
don
mp
ing
bre
rge
and
ery
dio,
and
see
hell
uld
ith
ni-
of
in
.22
oot
re-
ect

Wi
to ar
Man
tour
nigh
Club
p.m.
00 p.
Ma
play
the
tende
Joan
Fran
other
view
with
Pri
clude
Da
Sklep
mary
drop
facto
Jac
game
Phil
game
Ire
won
close
work
Bol



Mr.
diffic
to the
eveni
mies,
dered
Winni
Junio
Now
wheth
Brand
wins,
and F
cial se
Tuesd
are a

If b
Hawk
ency,
their
berth,
Satu



Pictured here is the layout of the new Rossmere Golf and Country Club which will be opened this summer.

1951

Rossmere Club Answers Need

It isn't long since anyone toting a bag of clubs and wearing plus fours caused considerable eye-brow lifting among the "sane", citizens as he proceeded to one of the few golf courses.

They thought he must have bats in his belfry to even walk down the streets in such odd attire, let alone hit a little white ball and then chase after it all afternoon.

But golf has received considerable impetus since those days. The Royal and Ancient pastime has caught on like wildfire, in fact.

Like the early bird which likes his worms sprinkled with a little dew, golfers now get up in the middle of the night in the hope of getting on the first tee sometime before noon on week-ends. Included in this group of golf-hungry players are those who once thought it was a fool's game.

The reason for this sad state of affairs is that there just aren't enough courses. The memberships at the private clubs are pretty well filled and the municipal layouts are taxed to the hilt.

A group of enterprising gentlemen out East Kildonan way have taken steps to alleviate this congestion. Last fall they got busy and cleared 160 acres of land just east of the end of East Kildonan car line. The course has been laid out and a winding creek, which runs through two-thirds of the land, has been completely utilized.

The clearing project was completed last fall and since then the club, which will be known as the Rossmere Golf and Country club, has made remarkable progress.

Danny Stack, professional at

Glendale, supervised the clearing project and laid out the course. He was particularly careful about leaving a few beautiful oaks standing in strategic spots.

Besides the natural hazards, the course will be well trapped and its par 71 will present a severe test for the best of them. It won't be a 'push-over' for the long hitters, either, for it is 6,265 yards long and there are five dog-leg holes.

The executive feels it will have an active membership and has therefore limited it to 350 for the time being. Provision has been made for the inclusion of ladies and junior associates of the members' immediate families.

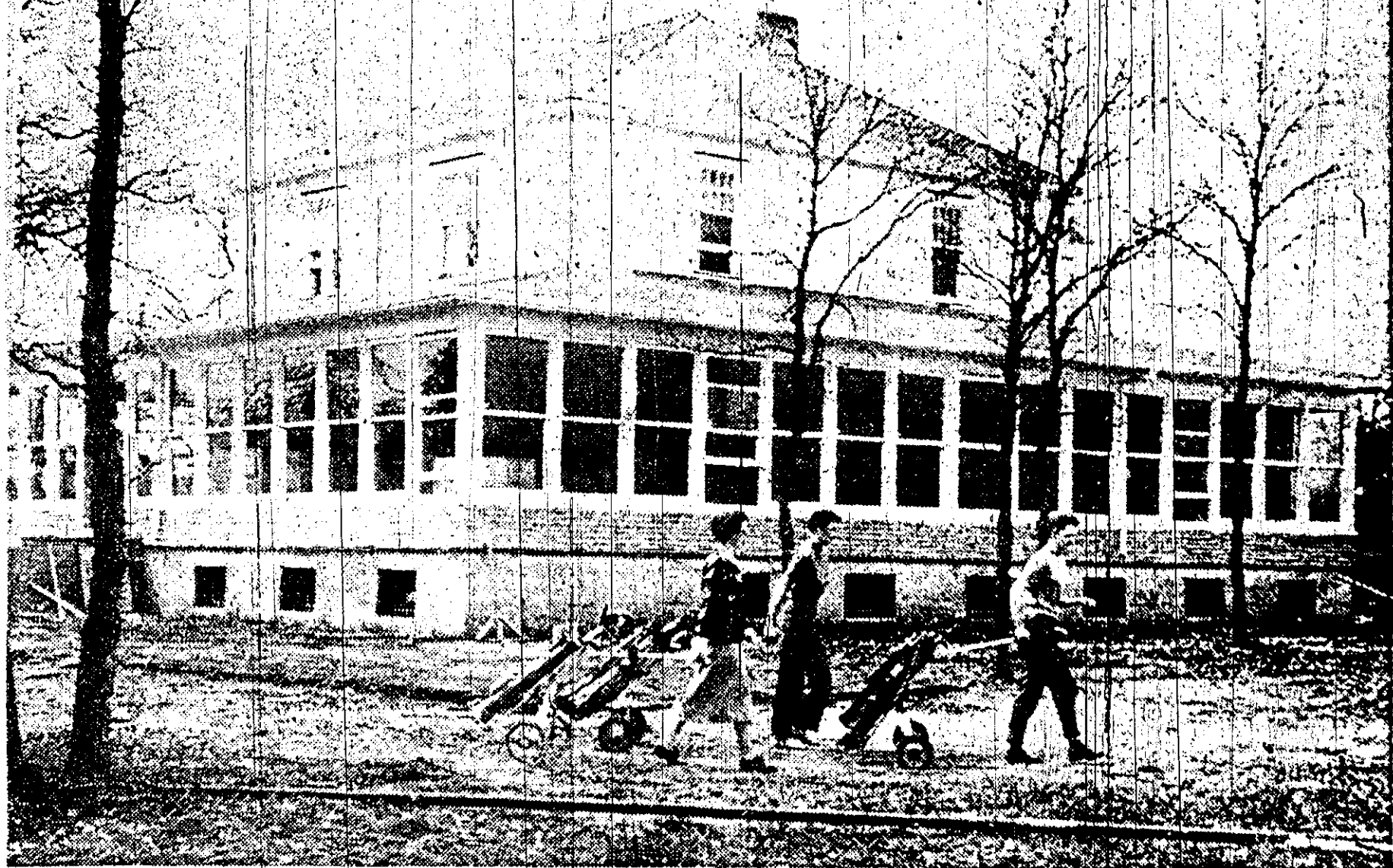
Now, with the evenings lengthening and a promise from the weatherman of an early spring, the membership committee is planning an early drive.

Those interested in getting a little more sleep and golf, too, are asked to get in touch with: Russ Atwell—504 340, or Imperial Bank, East Kildonan—501 405.



don.
ne
it;
all
th
by
ga
m-
to
se
go
th
Ce
Cl
It
lie
with
spoil
son
Or
ited
ic pe
last
point
Hi
furlt
Zarie
adop
in cl
at th
puck
from
but l
7
"Mo
hav
the
Wa
Del

May 17 1957



ROSSMERE'S NEW QUARTERS — Three golfers are pictured here passing the front of the new clubhouse at the Rossmere Golf Club in East Kildonan. The new quarters, a house which has been renovated, features a large glassed-in verandah of new construction. Sixteen feet wide, the verandah portion covers the front and one side, 50 feet and 56

feet in length. The new bar is located in one corner of the new L-shaped section. Locker rooms are in the basement and living quarters for the staff will be upstairs. Official opening of the new clubhouse will be held Saturday afternoon, with a party for club members and their guests set for Saturday evening to celebrate the big occasion.

Extension To Rossmere Golf Course Started

The dreams of a few people who eight years ago thought that the growth of East Kildonan warranted the development of a golf course in the municipality are close to realization. The Rossmere Golf Club, which has been operating a nine-hole course since its inception in 1950, has started construction on a complete 18-hole layout.

For the past month work has been underway clearing brush and scrub to make way for new fairways that will in another two years' time change an ordinary nine holes into a lush and beautiful golfer's paradise.

Nine new holes are being added and will extend almost to the CPR Line. It has been estimated that when the work is completed, the course, including the beautiful clubhouse, will be valued at close to a quarter of a million dollars.

Last summer the executive of the Rossmere Golf and Country Club engaged the services of Norman H. Woods, of Vancouver, to lay out the 18-hole course. One of the finest golf architects in Canada, Mr. Woods is completing work on Manitoba's newest course at Falcon Lake.

Last fall, members of the Rossmere executive who saw Mr. Woods' work on the Falcon Lake course, were highly impressed and decided Mr. Woods could make Rossmere one of the most beautiful and trickiest courses in Manitoba.

Work at Rossmere commenced early in February with the clearing of brush and laying out centre lines for the new fairways. Now workmen are busy plowing, discing and harrowing, in preparation for seeding in the next few weeks.

A total of 15 tons of grass seed will be used on the fairways, 800 pounds of special seed on the greens, 2,000 to 2,500 yards of sand hauled in for the bunkers, and 30 tons of fertilizer spread. The water supply will be obtained from a deep well that will probably be sunk about 350 to 400 feet.

The course layout proposed by Golf Architect Woods is an 18-hole championship calibre par 72 course of 6,685 yards which utilizes fully the rolling topography of the land and the creek which runs through it.

The full 18 holes will not be completed until some time in 1960. Next year, however, members will still have nine holes to play, some of which will be different from the ones being used this year.

A large number of members were out last week-end to officially open the 1958 season and are now looking forward to the not-too-distant future when they will be playing on one of the finest courses in Greater Winnipeg.

Keen interest is being displayed by people who have seen the work underway and the club reports brisk activity in membership applications.

Persons interested in golfing at Rossmere are invited to look over the facilities being made available and to contact the club's professional, Jerry Morrissey, a local lad who has taken over as pro this year and has already opened the pro shop in anticipation of a busy season.

Bob Stalker, the club treasurer, reports that members are rushing in membership dues now, and the social committee has lined up numerous club functions and club tournaments to ensure every member an interesting summer.

+ + +



Jun 1960

Rossmere To Officially Open New Golf Course Saturday

The Rossmere Country Club will hold the long and anxiously-awaited official opening of its new 18-hole golf course Saturday. The opening ceremonies is extended by the Rossmere Country Club to all residents of the community.

The opening ceremonies begin at 10.30 a.m. with Mayor George N. Suttie dedicating the golf course, officiating at the ribbon-cutting ceremonies and putting the course in play by driving a ball from the first tee.

Others taking part in the opening ceremonies and driving a ball from the first tee will be C. Jones, president of the Manitoba Golf Association; Mrs. Pearce, president of the C.L.G.A.; Johnny Esaw, Maurice Smith and Jack Wells, representing the press, radio and television.

Members of the official party will also include aldermen of the City of East Kildonan, presidents of community and service clubs, civic officials, directors of the club, and other notable dignitaries.

Many of Manitoba's finest golfers will also be on hand as they compete in the inaugural event of the inter-club tournament to be held annually at Rossmere for the O'Keefe Trophy.

A cordial invitation to attend



MAYOR G. N. SUTTIE

Salvation Army Captains Moved To Toronto Corps