

Study the Location of OAKLAND PARK

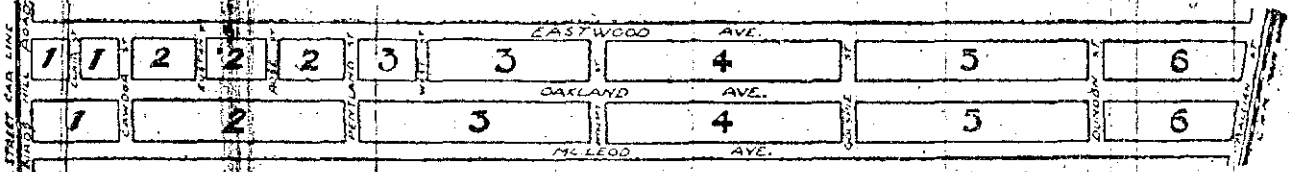
Oakland Park is located east of the Red River, just beyond the present north limits of the city of Winnipeg. It is about half way between the city limits and the line which, it is stated, the Canadian Pacific Railway will build across the north of the city to relieve the terrible freight congestion now confronting them. Whether that line is built or not, Northeast Winnipeg is now and will be the industrial part of the city; and

Oakland Park will be the location par excellence for the homes of the better class of the future industrial army of Winnipeg.

Oakland Park runs between the Bird's Hill Road and the Main line, C.P.R. Its lots are well located, treed, on roads that are graded and used to-day, and the street car line passes the property.

Now Figure the Price of These Lots:

You will find, upon careful comparison, that the prices asked for Oakland, from \$4.00 to \$14.00 per foot, are away down in comparison with other properties, equally well located.



Blocks and Prices in Oakland:

Blocks Numbered 1, Bird's Hill Road Frontage, per foot	\$14.00
Balance, per foot	12.00
Blocks Numbered 2, per foot	\$11.00 & 10.00
Blocks Numbered 3, per foot	9.00 & 8.00
Blocks Numbered 4, per foot	7.00
Blocks Numbered 5, per foot	6.00 & 5.00
Blocks Numbered 6, per foot	4.00

10%

Initial payment will secure your lot on Oakland Park. On one of the lower priced lots, this means that a Ten Dollar payment is all that is necessary.

Easy Terms: 10 per cent, down; 10 per cent, monthly.

2nd Purchase Plan—One-fifth cash; balance in four equal semi-annual payments.

PETER McCALLUM

322 SOMERSET BLDG., WINNIPEG