

North Kildonan School Board Answers Critics

April 1950

North Kildonan school trustees, and not the electors' committee of ward one, are responsible for supplying classroom accommodation for the municipality's school children, the North Kildonan school board said in a statement Tuesday.

The electors' committee charged Monday that proper recognition was not given to the wishes of the majority of ward one electors in a meeting a week ago, when they asked for a new school in ward one.

The school board statement said:

"With reference to an article on page three of the April 10 Free Press, in giving this statement to the press, the person or persons doing so evidently overlooked the fact that it is the duty of the school trustees to consider the educational needs of the municipality as a whole and to provide adequate classroom accommodation with as little cost as possible to the taxpayers."

The electors' committee claimed that approximately 270 public school children would be walking from half a mile to a mile through heavy traffic to the new rooms which it is proposed to add to the existing school.

Legislature May

North Kildonan District Seeks Two-Room School

Sept 1950

North Kildonan ratepayers may face an additional seven to 10 mills in taxation if a plan designed by the district school board to provide more adequate educational facilities materializes, it was learned Thursday evening at a meeting in Lord Kitchener school.

The plan, to curb serious overcrowding at Lord Kitchener, calls for the addition of a three-room wing to the present school and erection of a two-room school.

A member of the board, G. A. W. Morin, said the plan would cost ratepayers about \$75,000, payable over a period of 20 years.

At present, 438 pupils are attending the 11-roomed Lord Kitchener school. The 1948 total was 369.

"At least 14 rooms are needed to properly accommodate this rise in school population," said H. H. Hooper, principal.

Mr. Morin visualized the begin-

ning of a system of "feeder" schools to Lord Kitchener, with the erection of the proposed two-room school.

A meeting of representatives from the two wards comprising the school district will be held in the near future to discuss the matter.

Railway Gets As 'Conscience

When a man's conscience gets the better of him, it sometimes costs him money!

This appears to be the case of a mysterious individual who has sent the Canadian National railways \$1,000 as "conscience money."

Railway officials here Friday reported that an unidentified

Squabbles Cost Suburb Control of School Board

Internal strife over a considerable period, petty squabbles, and the defeat of a by-law authorizing the building of a new school have been blamed in the dissolution of the school board in North Kildonan and the appointment of an official trustee to administer the district.

A. A. MacDonald was named Wednesday by provincial education minister W. C. Miller to take

over school district administration following the resignations of four of the five members of the Lord Kitchener School District in the municipality, and the presentation of a 400-name petition to the department by ratepayers.

Co-operation Lacking

The petition appealed to Mr. Miller to take necessary steps for the appointment "owing to the lack of proper co-operation of school trustees of No. 2116 school district.

"There have been a number of representations from North Kildonan, made to the department over a period of years," said Mr. Miller.

"But we're very reluctant to appoint an official trustee and it will be only temporary," he added.

One 'Survivor'

Members of the school board who have resigned are H. W. Redekopp, chairman; Gerald LeBlanc, Albert F. Withers and C. Driedger. The only "survivor" is a woman member, Mrs. J. Morton.

The dispute came to a head

about a month ago when a by-law submitted to the ratepayers for construction of a new school was defeated by eight votes.

Some members of the board wished to have the school built, at a cost of \$50,000, on the site of the Princess Elizabeth school, which would benefit nearly two-thirds of the entire student population of North Kildonan.

Discrimination Charge

Another member wanted the new school at the site of the Lord Kitchener school, and failing that wanted the by-law defeated.

Some members of the board charged that groups of individuals "dug up" old, embarrassing situations to force resignation of one trustee. Another North Kildonan resident said that "racial discrimination" also entered into the picture.

Only trustee to offer a comment on the situation was Mr. Withers.

'I Resign'

"It's a very disgusting situation," he said. "The object is to co-operate on behalf of the children and for the good of the school district. If that's not possible, then I resign."

Reeve Jack Pearce said he did not wish to enter into any controversy over the school board.

Former board chairman Redekopp said: "I don't wish to make any comment on this at all. There has been enough trouble already."

Six Month Delay

Mrs. Morton was not available for comment today. It is understood she is away on holidays. The new provincial trustee, Mr.

30 Million Population By 1975: Business Target

MONTREAL (CP)—The Canadian Chamber of Commerce today urged Canada to aim at a population of at least 30,000,000 by 1975 and said this country needs more, not less, immigration.

"It is the people of Canada, who will lose out if short-sighted opposition to immigration impairs the country's future development," the chamber's immigration committee reported.

"We shall be aware of the danger in trying to keep so rich a land all to ourselves," it went on.

The national office of the chamber made public the committee's report as part of a continuing analysis of the effects of immigration

It listed seven reasons for stepping up immigration:

1. The St. Lawrence seaway and the trans-continental pipe line offer opportunities both for heavy labor and skilled artisans.
2. Young male immigrants, willing to work in out-of-the-way places would help speed development of natural resources.
3. They would provide farm labor to replace workers who have left for the city.
4. By boosting population immi-

gration would strengthen Canada's defences.

5. It would cut overheads, both by lowering per capita taxation and by permitting mass production economies. Moreover better use would be made of the government's transport and communication facilities.

6. Historically a heavy inflow of immigrants has meant greater stability, higher efficiency and higher production and consumption.

7. Immigrants create employment.

Duchess to Arrive At Quebec, Aug. 21

V
F
B
PE
licke
whis
at t
Com
110,
whis
in fl
At
been
ing
more
injur
The
ing m
away.
million

Empire Games. But Philip said no soap; he wanted to be free to

1 KILDONAN TRUSTEES July 1954

Continued from Page 1

other recommendation for a school by-law could be submitted to the ratepayers.

Then, if a new school board is not appointed, Mr. MacDonald in his capacity as a whole board, would make the recommendation.

Four Nationalities

"A new school is necessary out there because one of the main problems now is accommodation for pupils. That's the main thing I have to look into before school opens," said Mr. MacDonald.

More than 600 pupils attend classes in North Kildonan and there's not enough room now in both schools to handle them.

When queried on the "racial discrimination" matter, a trustee who did not wish to be named said that a lot of the difficulty arose out of the fact that two members of the board were Mennonites, another Dutch, one French-Canadian and one English.

Staggered Classes

It was learned today that the possibility exists of having staggered classes at both schools to handle the increased enrolment expected this September.

Some classes would begin at 8 a.m. until 12.15 p.m. and others from 1 a.m. to 5 p.m., but this plan is only in the tentative stage.

Another issue which came to light today concerned the distribution of a pamphlet prior to the by-law vote, which gave ratepayers an "alternative" cost for the school — an addition could cost \$24,000 while a new school altogether would cost \$50,000, with a corresponding increase in taxes.

This "misleading information", a trustee said, contributed to the defeat of the school by-law.

2 CROP QUESTIONS

North Kildonan School Bylaw Totals \$435,000

The rapid growth of new homes in North Kildonan is being reflected in its elementary schools, which are bulging with young children.

ratepayers in Wards 1 and 2 will be asked to approve a \$435,000 money bylaw next Wednesday.

If approved this would give Springfield Heights 16 additional rooms to its present 16, and increase the 3-room auditorium to a 7-room auditorium.

Maple Leaf, which now has four rooms, needs an additional six rooms and a three-room auditorium.

Maple Leaf School was built in 1956 to serve the north end of the school district, which was mostly agricultural at that time. Since then there has been a considerable number of houses built in that part of the district, and this year approximately 50 permits have been issued for housing.

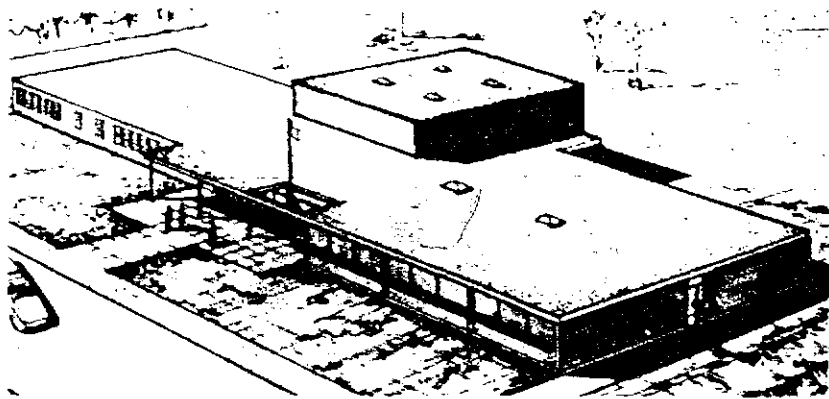
At the present time grades 1 to 4 are taught at this school, the grades 5 to 8 have to travel a considerable distance to Lord Kitchener, which is also filled to capacity.

The first wing of Springfield Heights School was completed in September and will be fully occupied by the end of the year. This part of the district is developing rapidly and the 16 rooms planned for this part of the district will be needed for the fall of 1961.

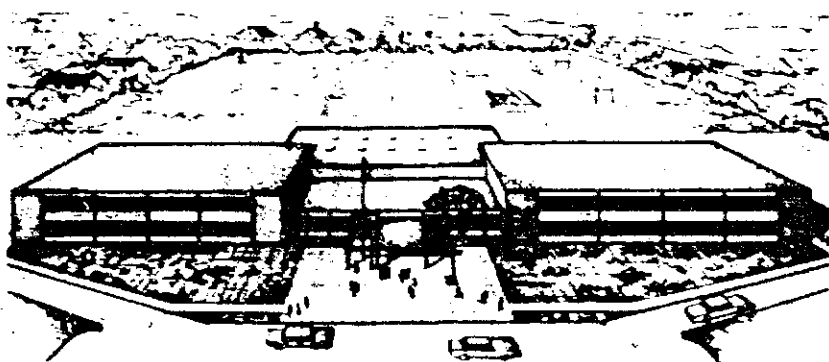
It is hoped that construction on these projects can be started this fall, assuring that the classrooms will be completed in time to start the 1961 term.

There will be polls at the following locations: Springfield Heights, Princess Margaret, Lord Kitchener and Maple Leaf Schools.

Oct 1960



PROPOSED MAPLE LEAF SCHOOL ON McIVOR AVENUE



PROPOSED SPRINGFIELD HEIGHTS SCHOOL ON SHARRON BAY

North Kildonan Schools And Additions From 1908 to 1965

1908 – East Kildonan School built it was located one west side of Henderson Highway at 1110 – two rooms, two stories

1910 – North Transcona School located on north side of Springfield Road in Harbourview area – one room

1915 – Rosewell School is built on the west side of Molson just north of McLeod – one room

1915 – Lord Kitchener School # 1 (John Pritchard) 1490 Henderson Highway – 5 rooms and auditorium

1948 – three room addition

1921 – Grassie School located on Grassie near Plessis – one room closed in 1923

1922 – McIvor School located at De Vries and McIvor – one room, closed in 1950

1950 – New Rosewell School 1455 Molson, just north of McLeod – 2 rooms and auditorium

1956 – two room addition

1964 – two room addition

1950 – Princess Elizabeth School located at Hawthorne and Rothesay – two rooms

1952 – one room addition

1959 – closed at end of June 1959

1952 – Lord Kitchener School # 2 (John Pritchard # 2) –south wing - four rooms

1956 – north wing – three room addition

1955 - 1956 – Princess Margaret School – four rooms

1957 – two room addition

1958 – four room addition

1959 – five room addition and auditorium added

1963 – seven room and 2 general room addition

1956 – Maple Leaf School – McIvor Avenue between Henderson Highway and Rothesay – four rooms

1961 – six room addition and auditorium added

1960 – Springfield Heights School – 16 rooms and auditorium

1961 – 16 room addition

The North Kildonan School District came into effect on January 1, 1925 after North Kildonan broke away from East Kildonan.

The McIvor School District broke away from the North Kildonan School District in 1949 after a dispute among residents of North Kildonan and contained just one school New Rosewell School, in 1965 this school had 170 students.

From 1954 to 1956 there was no elected North Kildonan School Board as a major dispute resulted in the entire North Kildonan School Board resigning. The affairs of the district were conducted by an appointed official trustee of the Department of Education from 1954 to 1956

In 1965 The North Kildonan School District contained 73 classrooms with 2,050 students

Population of North Kildonan in selected years

1925 – 1,100

1935 – 1,300

1940 – 1,379

1950 – 3,214

1954 – 3,350

1964 – 11,000