

Elmwood: Winnipeg's Hustling and Prosperous Suburb

In the history of the remarkable growth of Winnipeg and the adjoining districts, in none has that growth been more phenomenal than that of the Leaside Bridge district, known as Elmwood.

A few years ago there were but two or three small stores, with hardly enough people to enable them to earn a scanty living. To-day there are many fine places of business and upwards of

The Progressive Burg Across the Red River Has Experienced Remarkable Progress During the Past Year—An Enterprising Cosmopolitan District Rapidly Growing in Population—Better Bridge and Car Connection With Winnipeg an Urgent Need—Desire for Incorporation With Its Big Neighbor Seems General.

Winnipeg Electric Street Railway Co. have constructed a line which runs for two miles to East Kildonan, and which the company propose to extend still further. This side of the road is well graded, and there are many beautiful locations for building. A short distance from Vanderhill street is Elmwood cemetery, which in summer presents a very beautiful appearance. The land adjoining the Bird's Hill road is subdivided into building lots for upwards of a mile and a half, the lots being spacious, with plenty of



Residence of Councillor Berry, Norwood.
(Photo by Free Press Staff Photographer.)

600 inhabitants and the number is increasing every day.

There are two schools capable of accommodating 700 scholars. The Martin school was organized in 1898. At the end of that year the number of pupils enrolled was 22. From that time the enrollment has steadily increased. In 1902 191 names were on the roll while at the present time there are 290.

The first school site, the Martin school cost \$1,500. The building was 60x40 feet and consisted of but one room. In 1901 it was found necessary to increase the accommodation, and the Beaver school, on Taylor street, was built at a cost including the site, of \$2,500. This building was of the same dimensions as the Martin school, and contained two rooms. Last year the Beaver school was enlarged to 40x65 feet at a cost of \$3,000, transforming it into a seven-room school, and at the present time the school trustees are framing a large addition to the Martin school, which they find will be absolutely necessary next year.

The management of both schools is under the Board of trustees, of which Mr. Chas. Melchior is chairman, his associates being Mr. Newton and H. T. Hayes. The latter also holds the onerous position of secretary-treasurer.

Inhabitants of that nationality at the corner of Plessis and Montcalm streets. The German community have erected a church at the corner of Tweed and Montcalm. In connection with this church is also a school, where upwards of 50 small children attend. On the east side of the C. P. R. track another German church has recently been built.

The district boasts of a newspaper, the Elmwood Herald, edited and owned by D. McColl, with an office on Vanderhill street. The paper, which was started the beginning of March of the present year, is issued bi-monthly, and circulation extends over a radius of 20 miles.

The settlement, which commenced with but one or two small stores, now presents an array of buildings, chief among them may be mentioned the following:

- Grocery Stores.**
Brang Bros.
Green & Newton.
J. H. McNeill.
G. T. Hayes.
H. Posthumus.
J. Webb, & J. Kaufman.
H. Orr.
- Hardware.**
J. Sinclair.
- Milinery.**
Mrs. Geroux.
- Butchers.**
McComb Bros.
McDonald & Balfour.
Trim & McGrath.

The Beaver school, which is the largest and latest scholastic institution, is under the patronage of Mr. Ferguson, erected by an efficient staff of lady teachers, consisting of Miss James, Miss Oliver and Miss Christie. The teaching staff of the Martin school comprises Miss Day and Miss Pitts.

A taxidermist, E. Wilson, is located on Lemnois street, and numerous specimens of his art are on view in his museum.

Don McRae is the proprietor of a large feed and sale stable, also on Lemnois street.

A most reliable sign of the prosperity and steadily increasing importance of Elmwood is indicated by the opening of a branch on Lemnois street by the Canadian Bank of Commerce. The manager's opinion of Elmwood as a business centre was pitifully stated as follows: "Everybody is prosperous and

house. Mr. Riedle is also building a residence close to the brewery for his own accommodation.

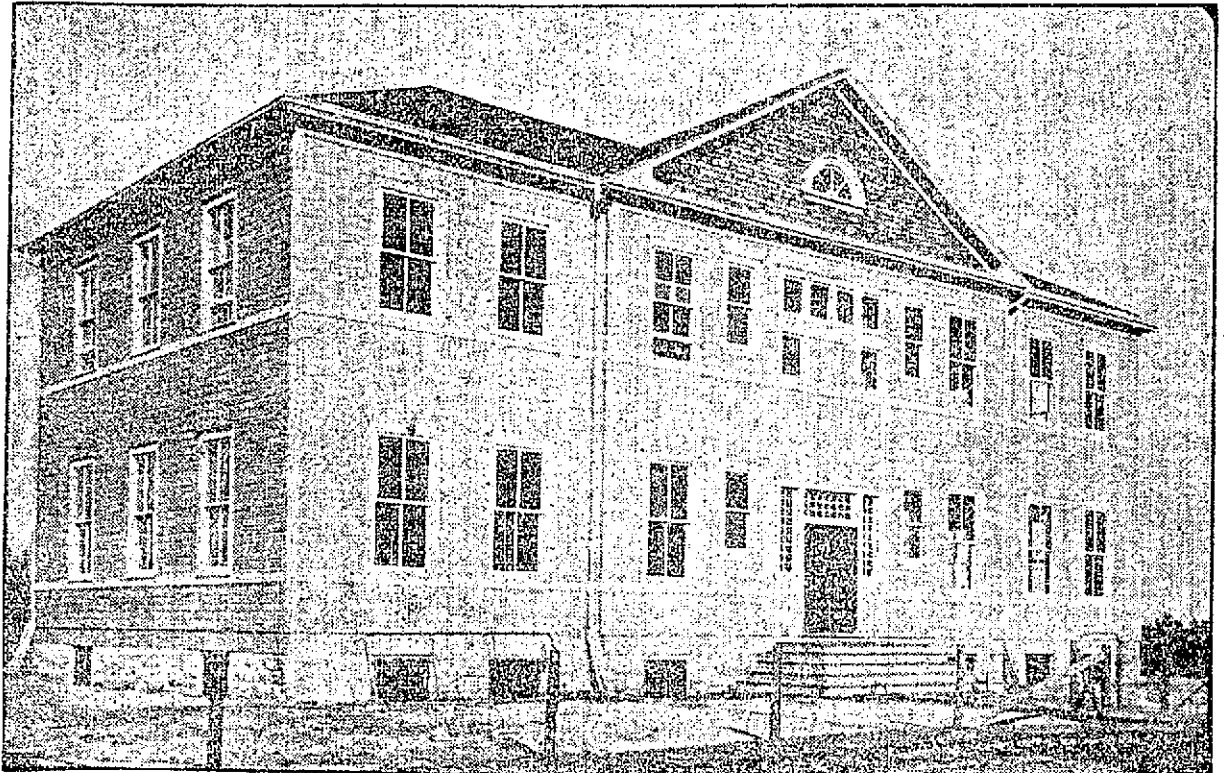
There are three hotels in Elmwood, though none of them have as yet obtained a license. The Rita House on Regent street is a frame building 30x80, two stories in height, containing 23 rooms, and capable of accommodating between forty and fifty guests.

The Riverview hotel, just east of Louise bridge, built for Fullinwider & Holmes, is a modern structure 40x70, three stories and basement, with commodious rooms capable of accommodating between 70 and 80 guests.

In Poplar Park, and are intending to remove their entire works to that point.

The Louise Bridge Improvement and Investment Co., incorporated in 1904, with A. McLennan president, W. K. McNeil vice-president, and J. K. Hardy secretary-treasurer, own considerable land in the neighborhood and are dealing almost exclusively in Louise Bridge property. An office of the company is situated at each end of the bridge. The company have erected a hall for the accommodation of lodges, dances and entertainments. The building is 20x50 feet, and at pres-

NEW BEAVER PUBLIC SCHOOL, ELWOOD



The erection of this building was necessitated this year by the remarkable increase in Elmwood's population this year. It has capacity for 600 scholars.
(Photo by Free Press Staff Photographer.)

The people pay cash for everything." J. Y. Griffin & Co., pork packers, who have a large plant, are planning extensive alterations and additions. Mr. Griffin has also erected two houses on Regent street and four on Jasper street, valued at \$3,000 each.

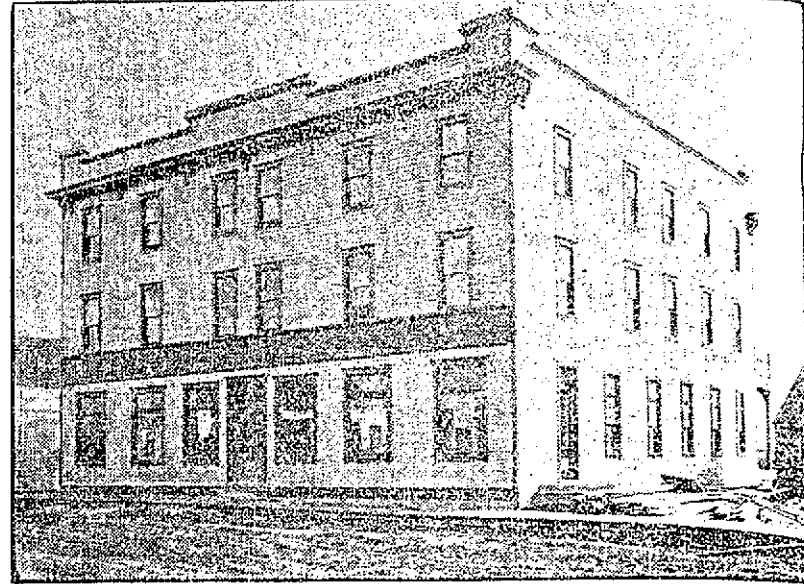
Robertson & King have built a large

ent one storey high. The building is shanty to be raised 20 feet and a ground storey built, which will have an addition at one end for a stage. The hall at present will seat about 400, and when contemplated improvements are completed it will hold many more. The demand for the hall is so

great that it is in demand for every night weeks in advance.

The company are handling real estate in Elmwood for the majority of the city firms who have property in that direction. Since the charter was granted to the company last October a total of over \$400,000, and several big deals involving large amounts are now pending.

As an instance of the upward trend in the price of real estate Mr. Mc-



The Riverview, a New Hotel in Elmwood, of which Messrs. Fullinwider and Holmes are the Proprietors.
(Photo by Free Press Staff Photographer.)

Phail states that land which a year or two ago sold for \$150 per lot cannot now be purchased under \$500 or \$600. He also makes the statement without any hesitation that before Elmwood is twelve months older land on Lemnois street will be worth \$100 per foot frontage.

Mr. J. K. Hardy, secretary-treasurer was one of the first settlers of the hustling little town, being actually the third man who had courage to face the conditions in Elmwood then existing. That is now thirteen years ago. There at first things were hard, for there was little else but bush in the embryo town in those days. Mr. Hardy does not regret the fact that he stayed through it all. As he looks back, however, and reflects that he could have purchased all one side of the street for \$15 a lot, and that they are now worth \$600 to \$800 each, he regrets not having made more of his chances.

Other new and handsome residences with tastefully laid out grounds are those of George Munroe, clerk of the municipality, John Henderson, wheat house is situated about one mile from the bridge; Arthur Erb, clerk to the Herald office, and the Martin school. Geo. Beck, an employee of the Imperial Oil Co., the Rev. D. N. McLennan, on the north side of the cemetery and Mr. J. W. Horne's of the Ogilvie Mills office home.

The inhabitants seem to be unanimous in their wish for incorporation or annexation to the city of Winnipeg, and are confidently looking forward to the present year. Recent action of the council in refusing permission to the Street Railway company to run street cars over the bridge, especially as there seems to be no valid reason why it should not be. They have, however, forwarded with hope and expectation to the promised bridge in the North End of the city, by which they hope to connect the city with the city and connect the city with the city.

English speaking, and nearly all own their own homes. Swedes and Germans are also represented, and there is a sprinkling of Russians.

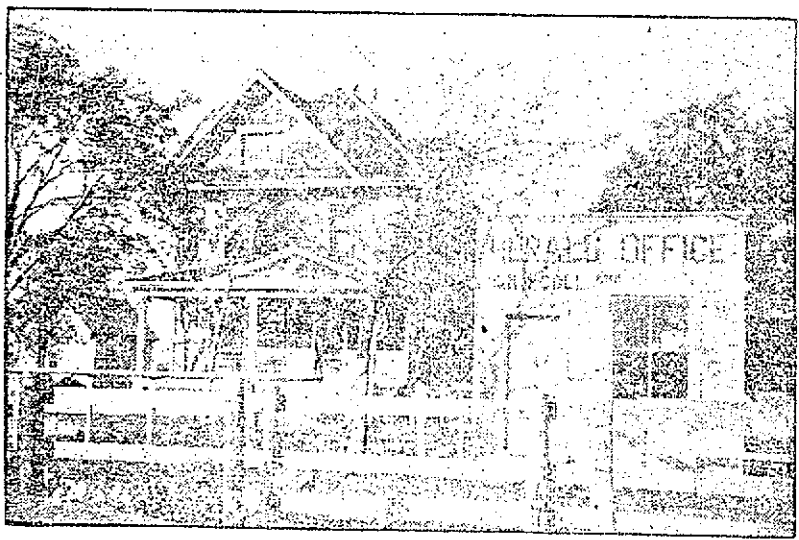
Though cottages and houses are scattered over a very wide area, and are to be found for a considerable distance round, the Bird's Hill seems to be the choice residential portion. The road itself is high, dry and level, with the exception of one sough which crosses it, and which the municipality have already arranged to have drained. A plank sidewalk runs for some two miles on the eastern side of the street, while on the river side the

Some river and run through the eastern portion of Elmwood.

With the improvements they present for in their streets and the present bridge approaches rendered at least a little less painful to travel over, the Elmwood inhabitants look forward to their suburb as eventually becoming one of the favorite residential portions of the Chicago of our Western empire.



Residence of Mr. J. W. Horne, on the Bird's Hill Road, Elmwood.
(Photo by Free Press Staff Photographer.)



Office of Elmwood Herald, and Residence of D. McColl, Its Proprietor.
(Photo by Free Press Staff Photographer.)

The district is well supplied with school edifices. On the Bird's Hill road, immediately south of the cemetery, stands the Presbyterian church, capable of accommodating 250, of which the Rev. D. N. McLennan is the pastor. On Lemnois street stands the Methodist church, with a capacity of 200, and the Church of England with accommodation for about 100. A Swedish church has been erected by the

- Boots and Shoes.**
Fred McCreghan.
- Bicycle and Repair Shop.**
J. K. Hardy.
R. Becker.
D. Murray.
- Drug Stores.**
W. McKeegue.
C. Brown.

store at the commencement of the Bird's Hill road; James Simpson, a block on Lemnois street; James McColl, a block containing three stores, reaching the post office on Lemnois street.

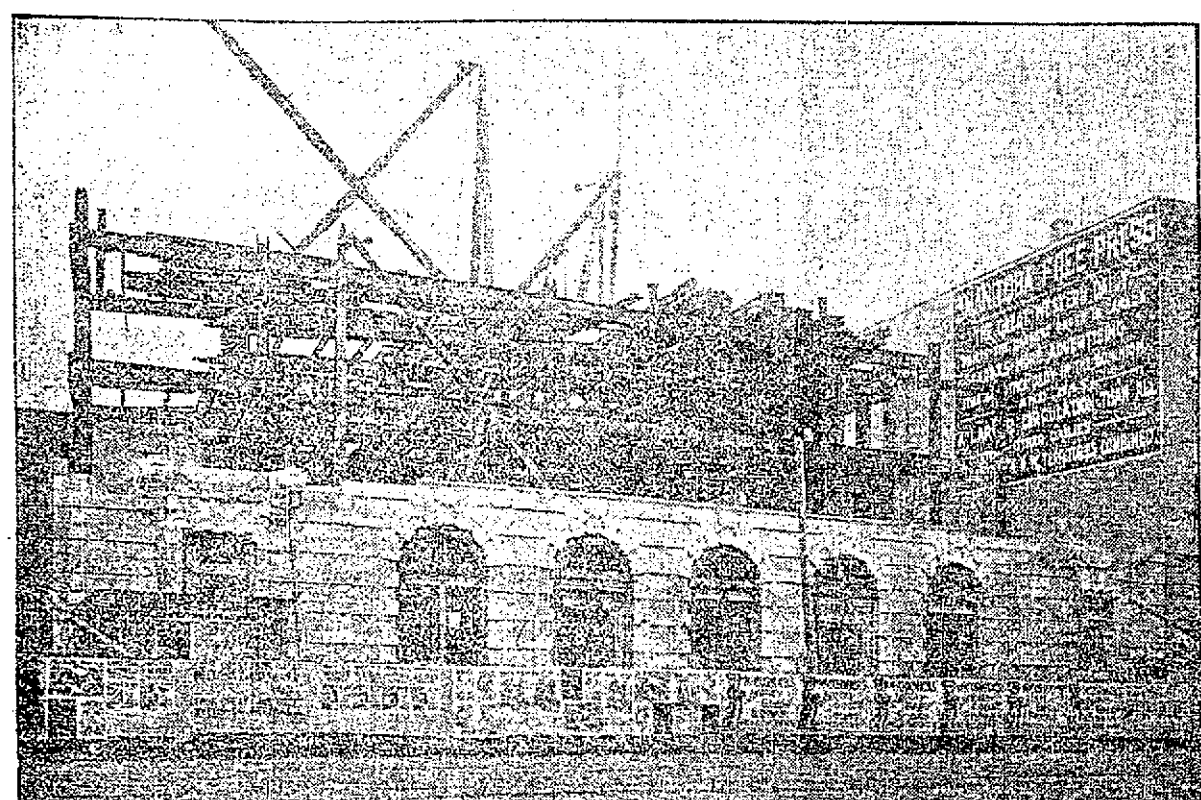
The Brewery with the growth of the district has also become too small, and a larger one is in course of erection beside it. On its completion the old part will then be used as a warehouse at the commencement of the Bird's Hill road; James Simpson, a block on Lemnois street; James McColl, a block containing three stores, reaching the post office on Lemnois street.

not be opened until the district is annexed or incorporated with the city of Winnipeg. At the eastern end of the building the firm own sufficient ground to make a bowling green. When opened the hotel will be managed by W. J. Holmes.

On Taylor street east of the C. P. R. main line, stands another fine hotel of frame construction, three stories and basement; it contains 15 large bedrooms and is designed to accommodate between 40 and 50 guests. The Maple Leaf is the name of this hotel, and Mr. S. Coughlin is the proprietor. The building is heated by a large furnace and is lighted by electricity from a dynamo on the premises.

Several large firms with offices in the city have warehouses, etc., situated in Louise bridge. The Canadian Oil Co. who own a large block of land with a spur track connecting with the C. P. R. have a large storage warehouse 220 feet long by 47 wide. They propose enlarging this warehouse early next year. They have just completed the erection of three tanks, each capable of containing 30,000 gallons of coal oil or gasoline. These tanks are up to date in every way; the oil or any contents can be pumped from one to the other at will.

A SEASON'S WORK ON THE NEW POST OFFICE



The Photograph Was Taken Last Week and Shows the Progress on the Work to Date.
(Photo by Free Press Staff Photographer.)

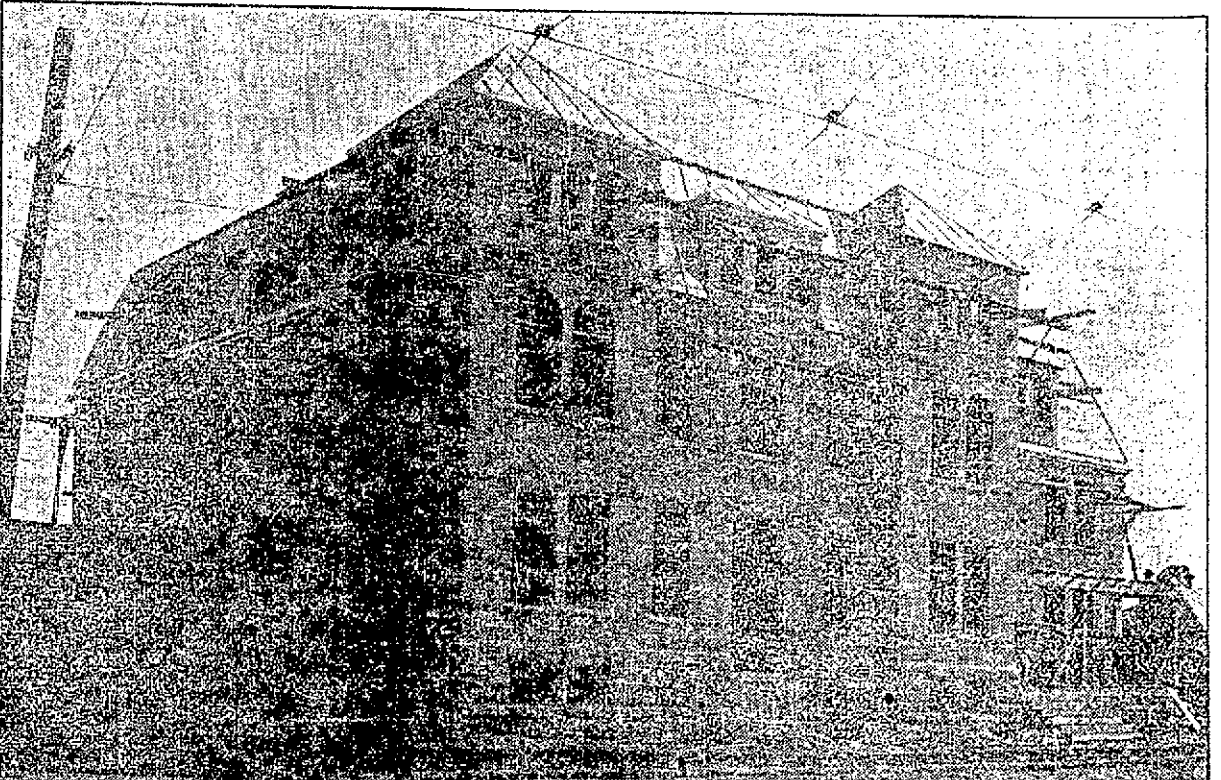
The Port Huron Engine and Thresher Co. are located on the corner of Jasper and Stadacona streets with warehouses and platforms for the easy handling of the cumbersome threshing outfits.

The Alsip Brick Co., which own a large tract of land in the western portion of the ward adjoining St. Boniface have very extensive works and employ upwards of 500 men, their payroll amounting to \$14,000. A large number of the employees are residents of Elmwood though some of them come from Polar Douglas. The company has recently acquired the brick yard owned by Couture Bros., and propose making extensive alterations and improvements. The yearly output is 2,500,000 bricks. Up to the present Messrs. Alsip Bros. have confined themselves to the manufacture of the common brick, but this fall many experiments are being made for pressed and various kinds of brick, and it is the intention of the firm to undertake the manufacture of fireproof brick.

On Jackson avenue Messrs. McMillan & Muir operate an iron foundry, the principal manufactures being pumps, iron bands and fire escapes.

The Winnipeg Stone Co. have an extensive plant fitted up with all modern machinery alongside the Canadian Oil Co. They are at present erecting a commodious office alongside the works. The Wheelon Marble Co., of King and Notre Dame streets, have

THE MILITARY STORES BUILDING



The New Military Stores Building, Fort Osborne Barracks, Corner of Osborne and Broadway.
(Photo by Free Press Staff Photographer.)