

# PERCHERONS FOR ALBERTA RANCH

## Williams Brings Large Consignment From France—Rough Trip.

The first consignment of percheron horses to be imported this year by Geo. Williams, of Calgary, one of the best known horse breeders in the West, passed through the city yesterday. For many years Mr. Lane, who is interested in several ranches in southern Alberta, has been a large importer of both percheron mares and stallions. Each year shipments comprising the best blood in France are brought out regularly, and the result in making so famous the "Bar U" ranch, which is owned by Lane and Fares, the latter being one of the partners of Gordon, Ironside and Lane, Limited, Winnipeg.

The shipment is intended for the Lacombe ranch, 50 miles east of Calgary, and is composed of twelve two-year-olds, averaging from 1,400 to 1,500 lbs. The effects of the long haul could be noticed in lack of condition, yet the quality and conformation are such that many will doubtless be chosen winners at the Alberta summer fair this year.

### Had Very Rough Trip.

The veteran horseman, Allen Williams, who has crossed the Atlantic many times in charge of similar consignments for the same breeder, is back on the job.

Mr. Williams yesterday stated that the ocean voyage had been extremely rough, and he had had the worst trip in his life this time. The shipment came by way of Antwerp, and was seventeen days on the water, ten of which the horses were under closed hatches. So tired about were the horses that he was at one stage of the trip afraid he would never land them alive.

"All bad things come to an end, however," added Mr. Williams, "and I was heartily glad when I landed them all without any damage in Montreal six days ago. However, as it is compensation for the rough voyage, we covered the distance between Montreal and Winnipeg in five days, which is the fastest time I have ever made with stock."

### Clydesdales, Too.

Mr. Williams stated that while on the train between Montreal and Winnipeg he had met Mr. Rhodes of the McKillop ranch, at Cochrane, who was just returning from England with a consignment of Clydesdales. So rough had been Mr. Rhodes' trip, that he lost a two-year-old filly a few days after landing.

### MOVABLE DAM WORKS WELL.

Flow Cut Off at Canal at American "Soo" in Thirty Minutes.


Sault Ste. Marie, Mich., May 19.—An official test made to-day by United States engineers of the new movable dam put the American canal out of commission from 2 o'clock this morning until 5 this afternoon. The test more than met the expectations of the officials. It is designed to control the flow of water through the canal in case of accident, and tests showed it possible to cut off the flow in thirty minutes. It is the only one of its kind in the world.

### Ottawa Domestic Burned.

Ottawa, May 19.—Katie O'Rourke, a domestic, was burned to death in a fire which destroyed the residence of Hector Chauvin, of Rideau street.

**STENOGRAPHERS** need "SNAP" after they change ribbons on the typewriters. "SNAP" takes off all the ink quick and clean.

"SNAP" is fine for the hands. 15c. a can.



### FAVORS ALL-RED CABLES

Royal Society Passes Resolution Endorsing Scheme—Officials Elected.

Ottawa, May 19.—Officers were elected at the concluding session of the Royal society, and a number of resolutions passed. One moved by Sir Sandford Fleming, advocated the All-Red system of state-owned cables. New officers of the society are: President, Dr. W. F. King; vice-president, Dr. W. D. Leasure; honorary secretary, Duncan Campbell Scott; honorary treasurer, Lawrence M. Lamb.

### MISSIONARY SOCIETY OFFICERS.

Second Annual Meeting of Alberta Organization Held at Calgary.

Calgary, Alta., May 19.—The election of officers was the principal business transacted at the closing session of the second annual meeting of the Women's Missionary society, which was held this morning at the Central Methodist church. The new officers are: President, Mrs. W. W. Chow; first vice-president, Mrs. Scott, Calgary; second vice-president, Mrs. Bar-

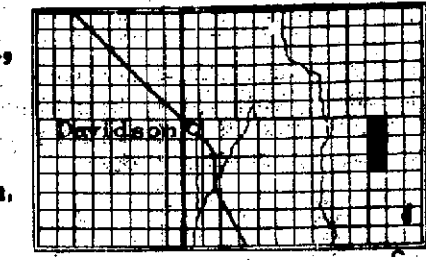
ner, Red Deer; secretary-treasurer, Mrs. A. A. Lydie, Lethbridge; corresponding secretary, Mrs. Magrath, Edmonton; treasurer, Mrs. Ash, Edmonton; secretary for mission circles, Miss Harrison, Macleod; superintendent of proportionate and systematic giving, Mrs. Wait, Edmonton; auditor, Mrs. Clark, Edmonton; organizers, Mrs. Shoultice, Carleton Place; Mrs. Strick, Calgary; and Mrs. Fowler, Strathcona.

### FALL RESULTS FATALLY

Cedric Dyer, Dead at Calgary, Was To Have Been Married Soon.

Calgary, Alta., May 19.—Cedric Dyer, who was thrown from a train near Strathmore yesterday, died late last night without regaining consciousness. His parents arrived too late to see their son alive. Dyer, who was only 21 years of age, was engaged to marry Miss Edith Robinson, of Spruce Vale, during the first week in June, and she is now in Ontario procuring her trousseau.

**Remick, Lloyd & Co.** Davidson, Sask.



**Remick, Lloyd & Co.** Davidson, Sask.

For Sale—Three sections of No. 1 steam or gasoline plow land. For particulars and prices write

**Remick, Lloyd & Co.** Owners Davidson, Sask.

## Take a Run to Kildonan East

—AND INSPECT—

# FERNWOOD

Where half acre VILLA LOTS can be secured; three hundred feet from electric car at same price asked for one seventh of an acre in less attractive districts. Keep your Winnipeg investments on the city map. Home seekers will be shown the property upon application to

**A. J. NORQUAY**  
Room 21 Canada Life Block.

## MUST SELL

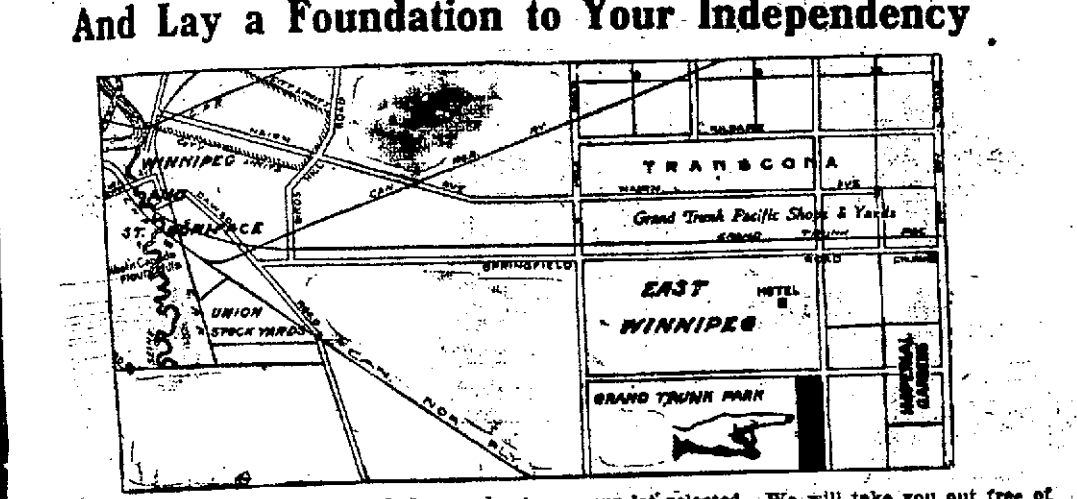
My Business Requires More Money

Walnut St.—Detached, 7 rooms, bath, hot, cold, and soft water, newly painted inside and out, some floor coverings, window shades, awnings, electric fixtures—all for \$4,500. Will discount this price for large cash payment. Snap for someone.

BOX 205, FREE PRESS.

# BUY AN ACRE LOT IN GRAND TRUNK PARK

And Lay a Foundation to Your Independency



Our land is rich, black loam, high and dry, and well cultivated. You can use it for raising potatoes or other vegetables, and it will pay for itself in less than two years at the present prices.

Remember, we sell an acre for the price they are selling 25-foot lots in the subdivisions just 99 feet from our lot, and each of our acres will subdivide into 12 lots, 25x112 feet, to lane.

Our terms are easy, and most everybody can afford to buy now and pay for it.

We are the owners, and have a clear Torrens Title to the property.

The electric cars will be running shortly in our district. Buy now, and get the benefit of the advance in price after the cars start to run.

If you start a market garden you have a good market for all your produce, as Transcona and East Winnipeg are at your door, and Winnipeg and St. Boniface only four miles away. The roads are good all the year around.

We have a splendid telephone connection with Winnipeg and the municipalities around.

We only have one hundred of these acres left for sale, so don't wait till to-morrow—come to-day and have your lot selected. We will take you out free of charge and show you the property at any time. If you can not come during the day phone us and make an appointment at our office at any time during the evening. Our office is open Saturday till 10 o'clock in the evening.

**PRICES ARE \$225.00, \$250.00, \$275.00 AND \$300.00 PER ACRE.**

**Terms**—\$10.00 cash and \$5.00 per month, at 6% interest—quarterly cash and the balance in four annual payments, at 5%.

We only put our acreage on the market a few days ago, and have nearly one-third of them sold. Don't miss this opportunity. Secure a lot, as they are going fast.

Transcona and East Winnipeg are growing fast; another contract for \$2,500,000 was let lately to complete the shops. This will make a total of nearly \$5,000,000 invested in building these great shops and yards.

Taking into consideration the local improvements that are going on now, we are offering the cheapest acreage that can be got at that distance from Winnipeg. Apply to owners—

**GELIN BROS.** Telephone Main 9451  
447 Main Street

# ELI DISTRICT

6,000 ACRES CHOICE WILD LAND

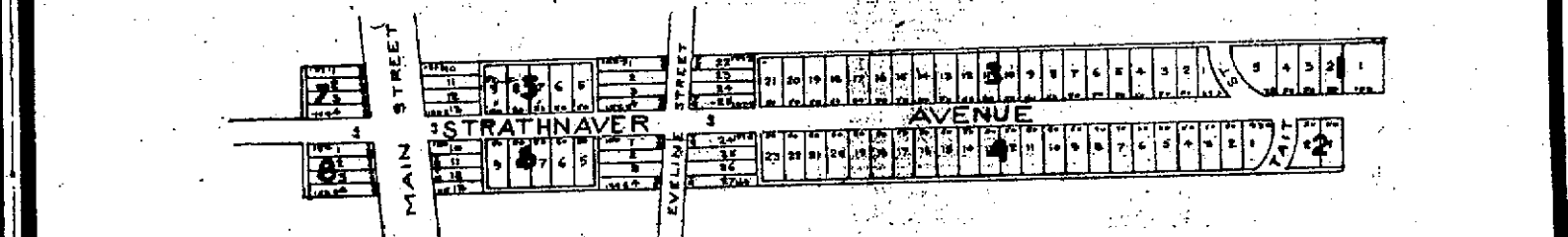
H. L. EMMERT LAND AGENCY

1 Kensington Block 275 Portage Ave  
Main 3018

# FREE A Season's Ticket to the Beautiful Town of Selkirk

## ONLY FIVE MORE LEFT

WE OFFERED to a limited number of purchasers a lot in Strathnaver Park, who gave us a satisfactory undertaking to build a house of not less than \$1,000 in value. First, transportation for 120 round trips between Selkirk and Winnipeg, or, Second, a rebate on purchase price of lot equal to this amount of transportation. The lots have sold fast. This offer is only good for **FIVE** more. Get in now. Live in Selkirk and travel **FREE** to your place of business this season. Seven electric trains daily each way. A building lot in **STRATHNAVER PARK** is more beautiful than anything else you can get within 100 miles of Winnipeg. Prices are very low. Living is cheap. Phone in your order and cinch the bargain **NOW**.



## STRATHNAVER PARK--The Beauty Spot of Selkirk

You couldn't select a more beautiful spot to build anywhere within 100 miles of Winnipeg than Strathnaver Park. It is the heart of Selkirk's finest residential district. Water, light, sewer and street cars right alongside. Beautifully treed, beautifully situated—altogether beautiful, and a sound, wise, money-making investment.

Living and Taxes are much lower in Selkirk than in Winnipeg. Does that mean anything to you? Strathnaver Park is too delightful to describe in black and white. See it. Build in it. Lots 50 x 117 feet.

**\$3.00 to \$5.50 per ft.** according to location. Easy terms arranged.

**"DON'T LOSE YOUR CHANCE. WRITE OR WIRE NOW."**

**SELKIRK LAND & INVESTMENT CO.**  
SELKIRK MANITOBA

# ROSSMERE GROVE

THIS property is composed of the BEST part of the well known Fraser's Grove, which for beauty of location cannot be surpassed. Situated entirely between Kildonan Road and the Red River, this magnificent subdivision MUST command instant attention, most of the lots being beautifully wooded with elms. **ROSSMERE GROVE** is not miles from no-where but is **RIGHT INSIDE**. Streets are being cut and graded and this location will make an ideal home site. All lots are 50 feet wide by 125 feet deep to 16 foot lanes, and proper building restrictions protect your interests.

## A FEW REASONS WHY YOU SHOULD INVEST IN ROSSMERE GROVE.

**ROSSMERE GROVE** has good street car service **NOW** (not proposed) running past the property.

**ROSSMERE GROVE** has electric lights **NOW** on the property.

**ROSSMERE GROVE** has telephone service **NOW**, connected direct with the city exchange (not long distance).

**ROSSMERE GROVE** streets are all 66 feet wide giving ample room for boulevards and a full width road.

**NOTE THIS FACT**—Every lot in this charming subdivision has direct access to the river, which is a unique feature.

We would suggest that you make your selection early, as these lots are out of the ordinary and will not be on the market long.

Prices and Terms: \$13.00 to \$20.00 per foot. 1/4 Cash, Balance 1, 2, and 3 Years. Torrens Title

Sale of this Property opens Monday, May 22nd and for One Week our Office will be Open from 8 to 10 p. m.

Call at Our Office for Maps and Additional Information

# R. L. WALSH

434 SOMERSET BUILDING  
Phone Main 240. Portage Ave. (Near Eaton's)