

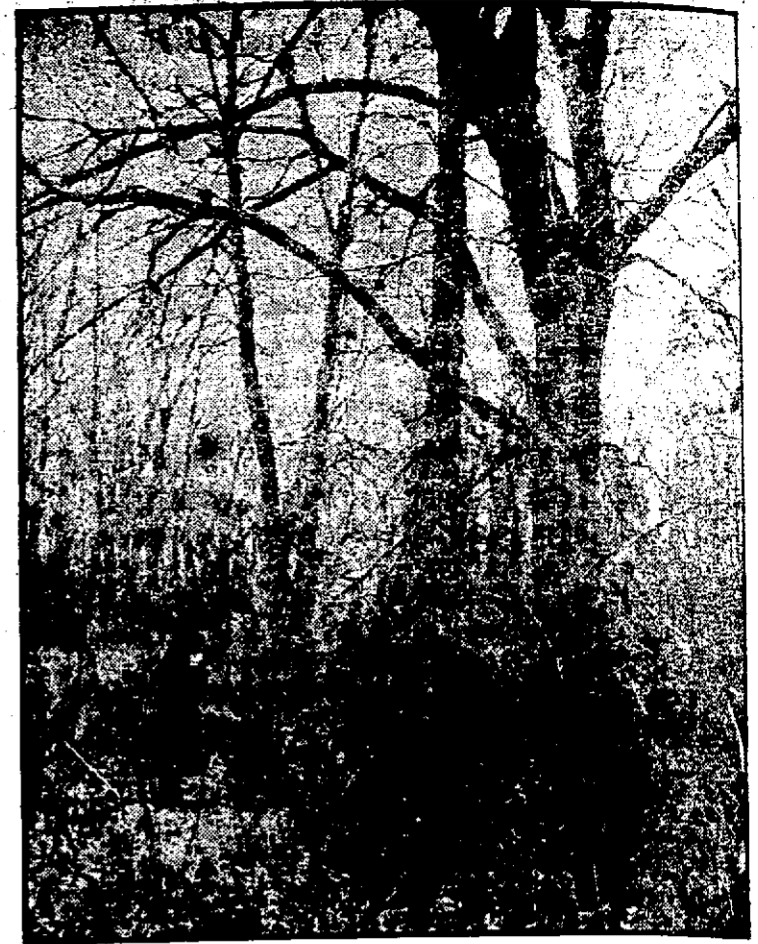
“WILDEWOOD”

Winnipeg's Most Beautiful Suburb

Magnificently Treed. Charming View. An Ideal Spot for Summer Residences

Only half an hour's drive from the centre of the city.

Easy of access both by River and Road.



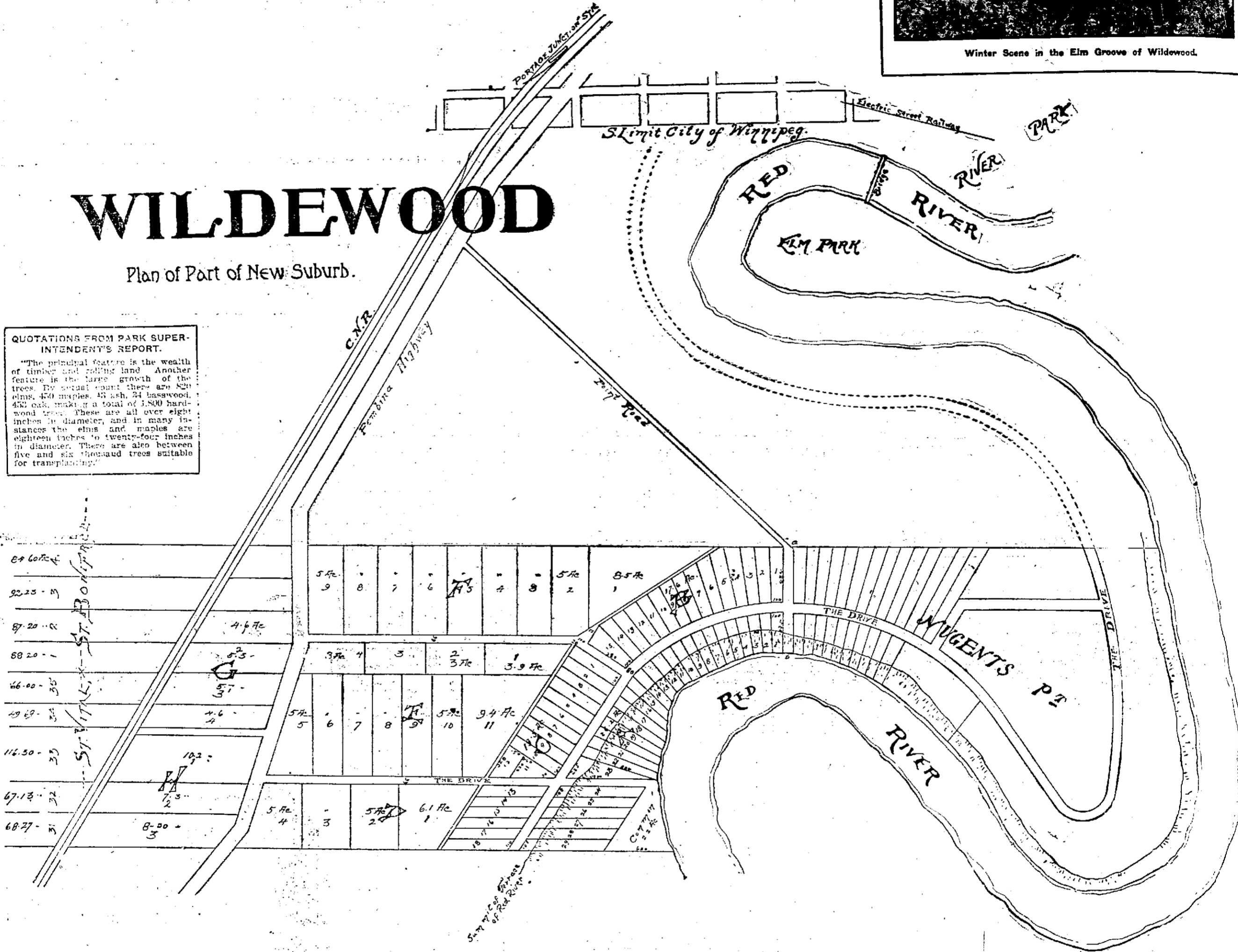
Winter Scene in the Elm Groove of Wildewood.

WILDEWOOD

Plan of Part of New Suburb.

QUOTATIONS FROM PARK SUPERINTENDENT'S REPORT.

"The principal feature is the wealth of timber and rolling land. Another feature is the large growth of the trees. By actual count there are 820 elms, 450 maples, 40 ash, 24 basswood, 430 oak, making a total of 1,800 hardwood trees. These are all over eight inches in diameter, and in many instances the elms and maples are eighteen inches to twenty-four inches in diameter. There are also between five and six thousand trees suitable for transplanting."



Summer Campers at Wildewood.

THE new owners of the Nugent's Point Park site have laid out a choice portion of the property in a most attractive manner in **LOTS RANGING FROM ONE ACRE UPWARDS**, with river frontage.

We are now instructed to offer this exceptionally beautiful suburban property to the public. The accompanying cuts are from photographs taken on the ground by one of the Free Press staff. These acre lots are offered at very moderate prices and will not be on the market long. The natural beauty and eligible situation of Wildewood make it certain that in a few years it will be the most fashionable residential district around the city.

Wm. Pearson & Company
383 Main Street, Winnipeg.