

Feb 1974

# School officially opened

The new addition to Maple Leaf school, 251 Melvor Avenue, was officially opened on February 14. Allen Rouse, chairman of the River East school board, cut the ribbon during the opening of the school's annual tea.

The \$600,000 addition to Maple Leaf school includes a ten-class open area, a material resources centre, a gymnasium, theatre, multi-purpose room, staff room, a science laboratory, offices and storage rooms, and a double kindergarten room.

Ron Patterson, representing the contractor, Columbia Construction, presented the key to the school to the architect, Gerry Macdonald. Mr. Macdonald then passed the key to Mr. Rouse, who, in turn, presented the key to principal Robert Harris.

The program also included selections by the school's junior choir, directed by Miss M. Enns; gymnastics by a grade IV group coached by R. Ford; dancing

groups, directed by Mrs. H. Hopko; and selections by the senior choir, directed by Mrs. V. Schludermann.

Mrs. Lily Schreyer, wife of the Premier, officially opened the tea. She congratulated the tea convenors, Mrs. P. Piper and Mrs. R. Van Linge.

The student enrollment at Maple Leaf school has doubled in the past three years to 440. It is expected that there will be 700 students at Maple Leaf School within the next two or three years.



## Buyin

A Home Is /  
Honest And  
Your Real E

## Red

667-5511  
Your C

THE COMMUNITY COMMIT

LIBRARY

# Maple Leaf School celebrates end of renovations

By Wanda McConnell  
Herald Editor

Having a window that opens and a door that closes has made Brenda Wedlake a very happy lady.

Wedlake is the vice-principal of Maple Leaf School. Last week the school celebrated its grand re-opening and Wedlake was one of those whose smile was the

broadest.

The school had been turned topsy turvy for several months while demolition, construction and renovation projects took place. The work began in the spring and the last bit of dust settled in December. Not a school day was lost and on Feb. 17, everyone was ready to celebrate.

Because part of what was demolished was the administrative office, Wedlake and principal Larry Hoffman

had to share a crowded classroom with three resource teachers for four months.

The secretary meanwhile, was holed up in a storage cupboard, Wedlake laughs.

"It was a great way to learn about teamwork and co-operation," Wedlake says cheerfully. It's wonderful now though. She has a window that actually opens, and an office door that can be shut for privacy.

Hoffman says things got a little crazy at times, but it's over now and "just seeing the students' bright smiling faces" and "a bright happy environment that reflects the good things that happen here" makes it all worthwhile.

The school underwent \$1.2 million in construction and renovations. The oldest part of the McIvor Avenue school was demolished, taking with it the office, resource area, and three classrooms.

A new spacious office area, resource area, special education classroom and one regular classroom were all built in their place.

Meanwhile, throughout the summer, crews worked to renovate the school's open classroom area. Most of the work was completed by September.

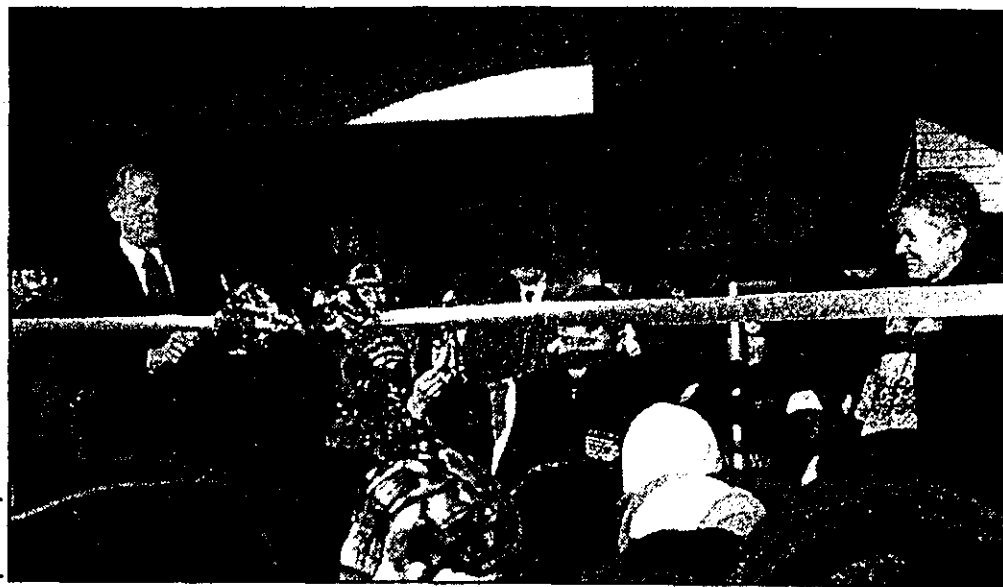


photo by Wanda McConnell

Grade 3 student Brittany Astrope and Grade 4 student Micky Durhack had the honour of cutting the ribbon to officially open the new wing of Maple Leaf School, as principal Larry Hoffman and vice-principal Brenda Wedlake looked on.

"Our open area is now a closed area. We've got walls!" exclaimed Grade 6 student Kiel Bobrowski, who spoke on behalf of students at the opening.

"The new part of the school looks awesome,"

added fellow classmate Ashley Walus.

That was certainly the consensus at the opening ceremonies.

Lori Chrol, president of the Maple Leaf Home and School Association said stu-

dents and staff met the challenges the construction project brought "with grace and good humour" and the wait for the work to be completed was well worth it.

## Field hockey told no building, for now

**HEART MATTRESS**  
STORES

**PILLOW TOP**

QUEEN SET

OTHER STORES ~~\$699~~ OUR FACTORY: **\$399**

TWIN SETS **\$109** OR **\$69** MATTRESS ONLY  
STARTING AS LOW AS

DON'T PAY A MARKED UP PRICE FOR A MASS PRODUCED MATTRESS.  
BUY CRAFTSMAN DIRECT & SAVE!

NO PAYMENTS FOR  
6 MONTHS O.A.C.

NO  
INTEREST

NO  
ADMINISTRATION FEES

895 CENTURY  
786-5400

622 DAKOTA  
257-2337

16-1500 REGENT  
661-9001

# Maple Leaf School back to normal after fire

## Fire set by arsonists, damages portable classrooms

By Wanda McConnell  
Herald Editor

There may have been a fire at Maple Leaf Elementary School last week, but principal Larry Hoffman wasn't feeling traumatized by the disaster.

"It's kind of the opposite," he said two days after the fire, which started at 2:30 a.m. Sept. 18.

"It's because of the incredible support that came to us from the community. There were so many parents phoning us saying 'if there's anything we can do,' and the church down the street (McIvor Avenue

Mennonite) offered us space, and our suppliers even said they'd loan us desks. The good thing is the incredible support people are willing to offer when you need it."

### Running at full speed

The school was closed Sept. 18-19, following a blaze set by arsonists that damaged two portable classrooms in the North Kildonan school. By Sept. 20, the school was "back running at full speed," says Hoffman.

Given that just a week earlier terrorists had attacked in the United States,

there was heightened concern about the emotional state of the school's 398 students.

Hoffman says teachers stated the facts and reassured the children that no one was hurt in the fire and that the fire didn't get into the main school building.

The guidance counsellor was on hand as well, ready to talk to children who might need individual attention.

"But we've had no reports of anything. We're ready for something that hasn't happened," Hoffman said.

One of the two portables

suffered extensive damage to an outside wall and the roof. The other had extensive smoke and water damage. Both should be repaired by December.

The portables had been used as a French classroom and as a grade 4-6 combined classroom.

Hoffman says until the classrooms are useable again, the French teacher will be moving from room to room for classes.

The grade 4-6 class has taken over a classroom that was used by the before and after school program and the lunch program. The before and after program has moved to the gym and the lunch program is taking

place in another classroom.

John Carlyle, superintendent of River East School Division, says he was impressed with the fast and efficient clean-up efforts. He says the odour in the school was quite bad Sept. 18 but by Sept. 20 it was barely noticeable.

Insurance officials estimate damage to the school at \$225,000, but Carlyle believes that will be the worst case scenario.

The investigation into the arson is continuing. The superintendent said there were no leads as of Sept. 20. He also said the division was not contemplating stepping up security at schools at this time.

**Oma's bakeshop**  
 1795 Henderson Hwy. in McIvor mall • 338-4697  
 At OMA'S We specialize in made-to-order  
**BIRTHDAY and NOVELTY CAKES, TORTES,  
 WEDDING and ANNIVERSARY CAKES.**

# Kids back in portables at Maple Leaf School

*By Wanda McConnell*

**S**tudents are back in their portable classrooms at Maple Leaf School following a fire there earlier this fall.

John Carlyle, superintendent of the River East School Division, told trustees at their regular meeting last week that the "fire is now all but a memory."

The fire, started by arsonists, occurred at 2:30 a.m. Sept. 18 damaging two portable classrooms attached to the school. Fire doors prevented it from spreading into the rest of the school.

The fire shut down class for a day and forced French classes and a Grade 4-6 combined class to relocate to other areas of the school.

Classes resumed in the portables Nov. 5. Carlyle praised Winnipeg Building,

the contractor who cleaned and repaired the buildings, for prompt and efficient work.

Damage to the portables was estimated at \$225,000. Carlyle says that although the final accounting has not taken place, insurance will cover all costs.

While it's good news that the portables are back in use, Carlyle said the fact they are a fire hazard is still an issue that the Public Schools Finance Board must address.

The River East School Board and the Manitoba

Association of School Trustees have lobbied the schools finance board to use different building materials for portable classrooms.

Currently, they are built entirely of wood and are a magnet for arsonists. "We'd like to see them progressively replace the portables around the province, or upgrade their exteriors with something that is more fire retardant," says Carlyle.

Meanwhile, the arsonists have not been apprehended and the criminal investigation continues.



Manitoba

**PREMIER  
GARY DOER**

## Maple Leaf School, Teachers, Salaries and Class Size

Teacher	Grade	Class Size	Salary
1960-1961			
Lillian Morgan	1	28	\$4,300.00
Annie Henderson	2	28	\$4,500.00
Hope Paulson	3	24	\$3,200.00
Helen Hopko	4	26	\$4,300.00
1961-1962			
Lillian Morgan	1	23	\$4,300.00
Annie Henderson	2	24	\$4,600.00
Ruth Nikkel	3	22	\$3,100.00
Joyce Schinkel	4	25	\$3,200.00
Joseph Bahr	5	24	\$3,600.00
Helen Hopko	6	17	\$4,600.00
1962-1963			
Lillian Morgan	1	35	\$4,400.00
Annie Henderson	2	28	\$4,550.00
Ruth Nikkel	3	28	\$3,125.00
Joyce Schinkel	4	24	\$3,500.00
Joseph Bahr	5	30	\$3,950.00
Helen Hopko	6	24	\$4,600.00
1963-1964			
Lillian Morgan	1	32	\$4,400.00
Annie Henderson	2	35	\$4,550.00
Toby Star	3	24	\$3,000.00
Joyce Schinkel	4	32	\$3,750.00
Susie Pauls	5	26	\$3,800.00
William Lebedeff	6	32	\$4,700.00
Jacob Reimer	7	28	\$4,250.00
1964-1965			
Lillian Morgan	1	30	\$4,600.00
Annie Henderson	2	34	\$4,700.00
Elaine Toews	3	29	\$3,400.00
Joyce Schinkel	4	27	\$4,100.00

Herma Keyzer	5	26	\$3,100.00
Susie Pauls	6	27	\$4,100.00
William Lebedeff	7	29	\$4,900.00
Jacob Reimer	8	25	\$4,500.00

1965-1966

Rosella Schroeder (special education)		12	\$4,200.00
Alida Zaal	1	28	\$3,300.00
Olga Kormilo	1 and 2	23	\$3,900.00
Annie Henderson	2	29	\$4,700.00
Elaine Toews	3	26	\$3,600.00
Joyce Schinkel	4	31	\$4,300.00
Herma Gibson	5	27	\$3,700.00
Susie Pauls	6	31	\$4,400.00
William Lebedeff	7	30	\$5,350.00
Jacob Reimer	8	26	\$4,650.00

1966-1967

Joyce Schinkel	4	23	\$4,800.00
Herma Gibson	5	33	\$3,725.00
Guenter Strempler	6	32	\$8,025.00
Reinhard Fershau	7	30	\$4,800.00
William Lebedeff	8	24	\$5,700.00

## Maple Leaf School Enrolment Over The Years

1956-1957 – 85  
1957-1958 – 107  
1958-1959 – 113  
1959-1960 – 122  
1960-1961 – 106  
1961-1962 – 135  
1962-1963 – 169  
1963-1964 – 209  
1964-1965 – 227  
1965-1966 – 263  
1966-1967 – 142  
1970-1971 – 314  
1971-1972 – 282  
1973-1974 – 440  
1976-1977 – 622  
1988-1989 – 540  
1989-1990 – 496  
1990-1991 – 454  
1991-1992 – 467  
1993-1994 – 503  
1995-1996 – 455  
1996-1997 – 459  
1997-1998 – 466  
1998-1999 – 464  
1999-2000 – 450  
2000-2001 – 427  
2001-2002 – 403  
2002-2003 – 380  
2003-2004 – 378  
2004-2005 – 351  
2005-2006 – 345  
2006-2007 - 339